

# Skills, Techniques and Process: *Tryptic*

For my first panel I bought some modeling paste to mix into my acrylic paint to add texture to my painting. I really wanted my landscape to look like my inspiration, having the same effect. I used lots of bright colors for my building so that everything stands out better. When painting this panel I used a palette knife to add even more texture. This piece took the longest to do because of the amount of paint used to create texture to my piece.

For my second panel I based my piece off of a album cover by Troye Sivan. This piece is quite simple but still gives off a meaning. I based the outline sketch off of my face. I spent a lot of time on the flowers that cover over her eyes to give the piece more detail. I made the shirt yellow, to be more eye catching and vibrant.

When I created the background for my third panel, I wanted to make sure that the background blended smoothly together, in a rainbow like effect. Then I did an outline of my face and filled the rest on the area on the canvas with objects and items that affect me. In this piece the objects around the girl are landmarks in Milwaukee.



When creating my piece I started off by making 3 separate canvases 60.96 cm by 30.48 cm. After I have stretched all three of my canvases I put an even coat of gesso on. Once I have gesso on my piece then I painted my background for each panel. Then when the background was dry I sketched out with pencil my design for each panel.



- Process for the first panel

# Experimentation

When starting my piece I experimented with textures and how I wanted my piece to look but also feel. Therefore for my second panel of a city landscape, I painted this only using a palette knife and modeling paste that was mixed into each color that I used. When experimented with the modeling paste I had to make sure I wipe my palette knife clean with every stroke of paint to get a clean effect. Using the modeling paste allowed for more detail to be included when the viewer is observing this piece. Overall the use of texture on this piece created a greater interaction with the detail in the water in the piece.

In the first steps one can see the layering of the modeling paste occur on the reflection of the water in the piece and how a contrast of light and darker shades create highlights and shadows, making the city look lively.



# Critical Investigation: Artistic Investigation

This triptyc piece "Little Girl" overall reflects off of the fauvism movement by using bright, vibrant colors. For my first panel the inspiration I used was an oil painting on canvas of a city skyline by Leonid Afremov. This piece is quite bright and eye catching and when doing my panel I based the city skyline off of Milwaukee's skyline.



"Little Girl"  
Acrylic on Canvas  
60.96 x 30.48 cm  
February 2, 2017

The second panel was based off of an album cover by Troye Sivan where I incorporated the flowers over the eyes design. The third panel was based off of another album by Thom Yorke, in which I included the color background and the idea of being surrounded by a city environment.



ITALY - VERONA -  
PALETTE KNIFE Oil  
Painting On Canvas By Leonid  
Afremov - Size 36"x30"(90cm  
x 75cm). (n.d.).

My triptyc piece "Little Girl" contains similar qualities as my inspiration Leonid Afremov and his artwork. In my first panel I included the idea of a city skyline and used vibrant colors. When doing this panel I wanted to incorporate the same effect by giving the piece texture and including bright shades of color.



Wild (Troye  
Sivan EP). (n.d.).

For my second panel I used the design of flowers over my eyes like my inspiration by Troye Sivan. I tried to include as much detail as I could to my flowers as they are the centerpiece of my artwork.

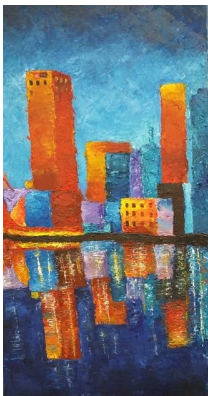


(You are) All I need.  
(n.d.).

For my third panel my piece revolved around the same idea as my inspiration by Thom Yorke by putting an outline of my face and surrounding it with different parts of the city.



# Communication of Ideas: Meaning



Panel two reflects the innocence that I contain which I show by placing flowers over the eyes. The flowers symbolize as being delicate and fragile in which I connect back to my childhood and I have always tended to follow the rules, being obedient.



The first panel of tryptic represents the Milwaukee skyline in which I connect to that isolated feeling as I was never able to do anything on my own. In which I found hard to except because I tend to focus on being independent. I can also connect to first panel to somewhere that I enjoyed going when I did because it was a beautiful site and fun to be around the lake and city downtown.

The third panel reflects myself in the city and how my city affects me daily. As the background of my piece I used several landmarks in Milwaukee that I have shared a memory with. I decided to have Leonid Afremov and my other inspirations as a influence to my tryptic because it provides a bright scenery in which you already attract to even though you might not know the meaning behind each piece.

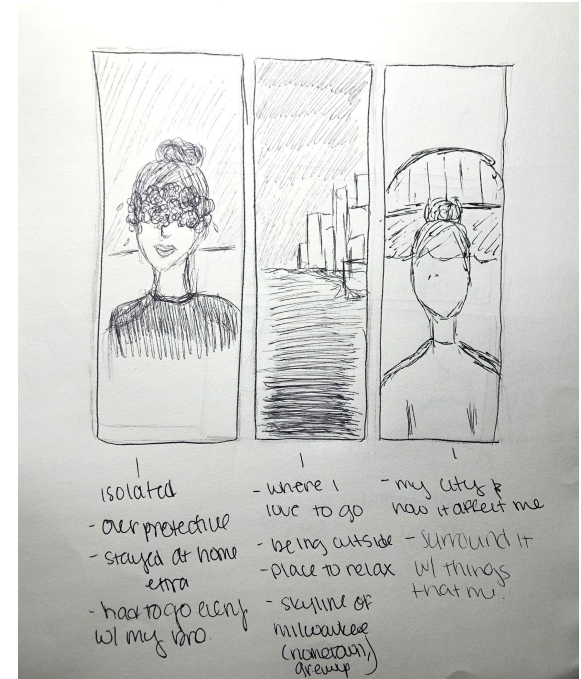
The meaning of this tryptic piece "Little Girl" represents the ways I raised and experiences I have been through. I have always lived and been raised by my father who taught my brother and I to make good decisions in life and you'll be successful. These pieces connects to myself growing up being quite an innocent child and was sort of isolated in my house due to having a stricter parent. Especially when it came to myself as his "Little Girl" wanting to do anything, it would become an issue versus my brother.

# Reviewing, Refining, and Reflecting



When doing my painting I was able to work with new material because for my first panel I decided to use a palette knife and texture paste in which I have never used before. I think that my piece turned out well due to it being my first time using those materials.

In panel two I think I did well at my flowers by giving variety of shades and detail in each flower. In my artwork I thought that I did well at blending the pieces that needed to be blended and having a powerful looking backgrounds such as panel three. Some struggles that I have had in the last of my three panels is reflecting the water and how to apply the appropriate amount of detail, to give the piece that water affect. If I were to redo this project I would change the color scheme to more of a bright pastel because once I started with a bright color scheme, the colors were quite bright and hard to maintain throughout all three panels. At the end of my piece I found that I was mostly successful at including my artist inspiration and incorporating enough detail in each painting so that each piece was eye catching in there own way, being able to connect with each other.

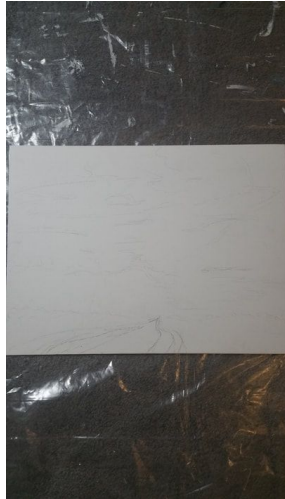


# Skills, Techniques and Process: *Nightfall*



Set Up:

To start of I placed the start of my piece onto a plastic wrap sheet to maintain a clean area because the technique I used was based off of my inspiration Leonid Afremov and his use of a palette knife.



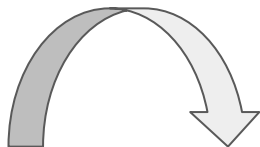
When making my piece I first started off by looking at the photo I took and sketching it onto my canvas. Then from there I started on the middle section of my piece where the yellow, red and orange section is. For each of the paints I used I mixed modeling paste into them so there would be texture on my piece. After the middle section I worked up and outwards on the pink and then the blues.

Once there was a base coat on my canvas of the colors, I went over it several times trying to mix the colors together. With each stroke of the palette knife I wiped it off on a napkin, picked up more paint and then did another stroke, repeating this process several times. When painting The colors were always mixed on my palette and never on my canvas because if I would have mixed the colors on my canvas, it would have looked sloppy. Once I had the desire look I when back through my piece and added detail and highlights where it was needed to provide more depth into the piece.

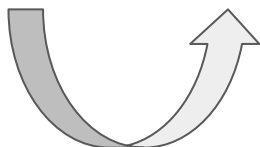




# Experimentation



Here are separate close ups of where I was practicing Afremov technique by scraping the palette knife on a diagonal going down and then repeating that motion but going the opposite direction. These images show myself practicing the motion of his technique, and continuously going back in forth in a X like motion.



Before working with applying paint onto my canvas I practiced doing strokes with the palette knife on some paper just to see the different effects that I could make. I tend to leave a roll of paint on one side of my palette knife and angle it onto the paper, and pressed down and away to create the similar effect as Leonid Afremov as he paints. With experimenting all I wanted to do was practice Leonid Afremov's painting techniques so that I can get the motion done properly.



After getting the motion, I start to mimic Afremov and clean off my palette knife with each stroke that was made to create his exact look. Once I felt confident with my experimenting I started creating my piece.



# Critical Investigation: Artistic Investigation

My piece "Nightfall" reflects off of my inspiration Leonid Afremov is represented through my use of bright colors in the sky. When creating my piece I used a great deal of yellows and oranges to catch the viewers attention. I also tried to use the same technique as Afremov by creating a piece only using a palette knife; although I didn't use oil paint, I had acrylic paint that I mixed with modeling paste to give off the same effect.

I also tried focusing on painting the same landscape with a large portion of sky to connect to the "I Saw A Dream" pieces because they both contain the same use of style and technique. In which was done successfully as you can see the large sunset in the art piece.

I SAW A DREAM - Palette knife  
Oil Painting on Canvas by Leonid  
Afremov - Size 20"x36". (n.d.).  
Retrieved September 08, 2017



"Nightfall"  
Acrylic on canva  
30.48x40.64cm  
September 1, 2017



The piece "I saw a dream by Leonid Afremov" inspired me to create "Nightfall" due to Afremov's strong use of brights colors and his technique. Leonid Afremov created two types of paintings named "I Saw a Dream" that contains the same use of bright colors and texture of a palette knife. When creating my piece I tried to include the use of his colors by containing all the warm colors in the middle of the piece and then the cooler colors more on the outside. I also followed the same technique as Afremov by only using a palette knife to paint with, to create texture onto my piece.

I Saw A Dream 2 by Leonid Afremov.  
(n.d.). Retrieved September 04, 2017

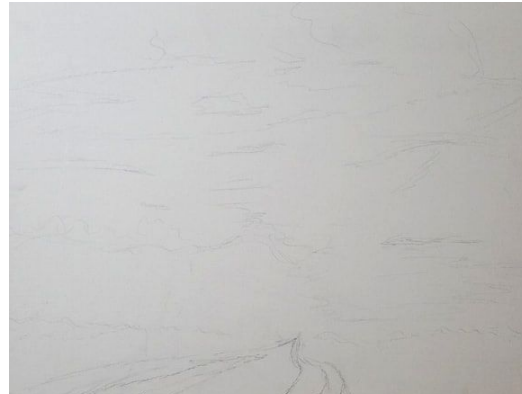


# Communication of Ideas: Meaning

The meaning of this piece is to simply enjoy the experiences and the things you see in your life. It's to enjoy time in the moment and appreciate all the little things in life. In my piece "Nightfall" it generally focuses on aesthetics and appreciating its beauty. When viewing this piece there is no wrong interpretation other than not to appreciate what you see and to even possibly connect it to a time in their lives where they experienced a beautiful scenery. The use of bright colors is suppose to give off positive vibes and happy thoughts. The contrast between the war colors in the sky and the cool colors of the foreground cases the viewer to focus on the center of the piece. Overall the piece is to be aesthetically appealing to every viewer and allow them to connect a specific memory or time that they appreciated the world and connect back to this piece.



An image that I personally photographed.



# Reviewing, Refining, and Reflecting



I enjoy making pieces that involves modeling paste because it's another challenge that is added on when creating the piece. I think the piece includes a great deal of bright and eye catching colors which was what I was going for. When creating my piece I struggled with blending the oranges out with the blues to make it look more natural. It was also hard for me not to merge colors onto the canvas and making sure to have clean strokes with the palette knife because its a simple task that can mess the look of the piece. When using the painting I needed a solid coat on the canvas so I when I go over it with detail it will appear more textured because the modeling paste. But when the paint started drying it made blending much more difficult to do. What I found successful about my piece is the gradation of color, going from yellow, orange, red and pink. I also think there is a nice contrast between the foreground versus the sky using a dark bluish black against a bright colors.



A. (2016, May 26). Retrieved September 10, 2017, from <https://www.youtube.com/watch?v=3XQ BcHNITcI>



# Skills, Techniques and Process: *Ephemera*

First when doing my project I went to the park and gathered as much leaves as I could placing them in there own bag by color and crumbled them. Then I picked the place of where I wanted my piece to take place and started drawing my outline with chalk. I had to make sure that I had a big enough area to conduct my piece because of how large I wanted it. Then I created a outline with chalk, drawing six petal shapes. I then started to place the leaves onto the design that I created.

This took about an hour or so placing all of the leaves down. I had to make sure the leaves lined up directly on top of my sketch. After the outside layers was finished I started working on the middle section of my piece. I made six droplike shapes total and each one had a gradient from yellow, orange, brown and red. Doing my piece in this way created emphasis due to the use yellow. Once I was finished laying down all of the leaves I was able to see the leaves dissipate over time, as my design fated away due to natural elements.





# Experimentation



When doing my piece I experimented with whether I wanted my leaves to be crushed up or left whole. I never actually conducted an experiment where I was working with leaves to create a piece therefore I had to experiment with the material. I decided to crumble my leaves because it gave a better effect when viewing my piece due to the design showing up more clearly. When doing my piece I was experimenting on what I wanted the center of the piece to look like because I wasn't exactly sure if I liked that part of my planning sketch. What I did was I added smaller, rounded petal like shapes to the center of the piece giving a greater image of a flower. I also experimented with the colors of the leaves by choosing to go in a gradient of the colors from light to dark in the center of my piece. I use the yellow leaves in the center of the petal at the point and then went to an orange and then red color. I also focused on my placement of my leaves and how my totally outcome would look.



Here I am focusing on my layout of my work and how the brown and green leaves look together as they are the main two colors for the outside lines of my piece.



This is when my piece was drenched with water and then dried up. This was to see how the weather could affect my piece and the final outcome of it.

# Critical Investigation: Artistic Investigation

In "Gone with the Wind" my artistic inspirations was two of Andy Goldsworthy ephemeral pieces in which he used the resources around him that he found in nature. In Goldsworthy first piece I based the idea of using bright colors for the leaves, making it "Gone with the Wind" more eye catching. In the other ephemeral piece by Goldsworthy, I liked the idea of incorporating a spiral like feature in my piece, connecting the piece to how it has a moving effect, almost like its never ending.



"Andy Goldsworthy - Melt." *Andy Goldsworthy - Melt*. N.p., n.d. Web. 26 Oct. 2016.

"Gone with the Wind"  
Ephemera  
Oct. 22, 2016  
182.88x182.88 cm



In Goldsworthy piece he used a gradient of the leaves as his whole piece, where as my piece I only included a gradient in the center of my artwork. As well as in Goldsworthy other piece, his spiral design is made with rocks and scatters further out, when my piece includes a spiral effect at the end of each point. Overall I successfully made a piece that reflects upon my inspiration, using the thought of nature.

My piece "Gone with the Wind" share similar qualities with my inspiration Andy Goldsworthy and his ephemeral artwork. My piece was also created from found materials from nature. Andy Goldsworthy art and my piece both accentuate the beautiful aspect of nature and how our work of art won't last as time passes. My piece is created by taking several parts of my inspiration such as the leaves, and the idea of having a spiral like feature included in my final product. Nevertheless, there are still differences between my inspiration Andy Goldsworthy and my piece.



"Andy Goldsworthy - Melt." *Andy Goldsworthy - Melt*. N.p., n.d. Web. 26 Oct. 2016.

# Communication of Ideas: Meaning

The meaning of "Gone with the Wind" correlates to the theme of nature. When making my piece I decided that I would create it in a large open area in the cement. The idea of cement can connect to the industrialization and how several industries are continuously being developed. Due to these industries growing, they cause our woods and land to be taken down and destroyed. Then the nature that we still have becomes limited and becomes more valuable. These industries are made to boost the economy and never truly ends, it's a continuous cycle which connects to the spiral feature in my piece. The meaning of the piece relates back to the title "Gone with the Wind" representing how something so simple as the wind eliminated my whole ephemera piece just like how industries can destroy nature.

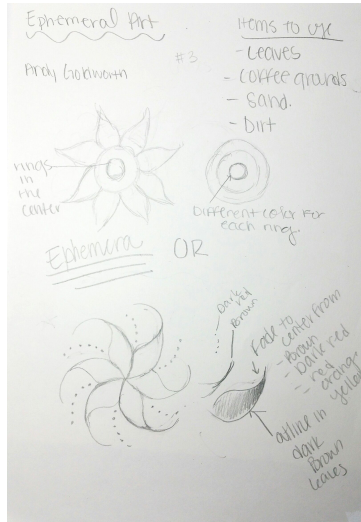




# Reviewing, Refining, and Reflecting

When doing my ephemera I learned more about the process of creating my final piece. There was a lot of steps that I had to take to even begin my piece. I had to go to the park and gather enough leaves as well as create an outline for myself for when I placed down my leaves that it would be

easier. I wanted to make sure that I covered the chalk lines as much as I could to get the best looking outcome. When doing my outline I had a few sketch marks of chalk that I had to try to remove so that they wouldn't appear in my final piece.



One of the things that I struggled with the most was trying to keep the leaves onto my outline. Since I was doing my piece outside, I was constantly fighting with the wind and making sure that the leaves weren't going to blow away. The wind was my biggest challenge to overcome because the wind would have destroyed my whole piece while I was in the making process. I found out that adding a thicker layer to my design emphasized the colors from the center of the piece. If I were to do this piece again I would've wanted to add another layer to the piece, more in a green color. Overall I thought my piece was successful and that my final design was appealing and vibrant to look at.



# Skills, Techniques and Process: *Summertime Sadness*



## Etching Process:

To start the etching process I placed my drypoint plate onto the sketch that I wanted to use for my finally piece. Then I use the inscriber to go over my sketch tracing every line as accurately as possible. Below are photos of my etching process and how the design I chose is turning out.

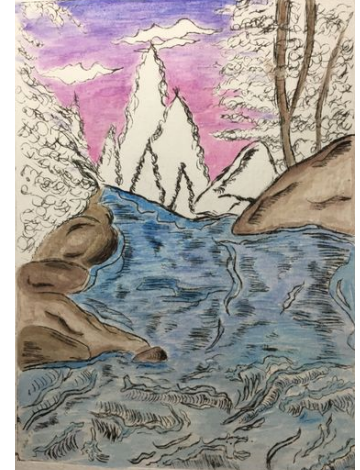


## Making Process:

To start off this piece I when into my sketchbook and chose the sketch that I wanted to use for actual drypoint. Once I knew what sketch I wanted to do I grabbed the inscriber tool and place my drypoint plate onto my planning sketch.

## Printing Process:

I created multiple prints of my drypoint trying to print the piece with the least amount of smudges and ink printed outside the border. You can see that the more I printed my piece, the better it looked with each piece. This meaning I increased in craftsmanship and was improving in creating quality work. Once the piece was printed, I chose the best piece to continue with and add watercolor paint onto.

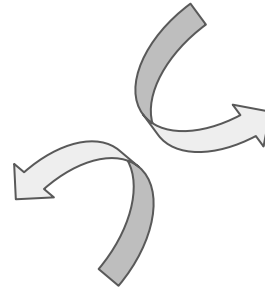
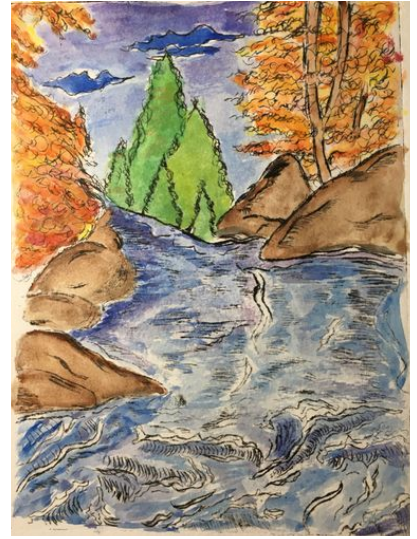


# Experimentation

When doing my piece I had a few bad prints that turned out in which I experimented on by using watercolor. I tried a couple of ways to applying the watercolor and how I wanted my final print to turn out. I messed around with different seasons and how it would look if the leaves were changing colors during the fall as well as the summer time where everything is all green. I worked with adding layers of color on top of each other, especially with the leaves to see how if they worked well together or not. I also experimented with the gradianation in the sky. I went from a dark blue to a purple and finally a pink shade to represent a sunset or possibly a sunrise.



With this print I practiced on working with a dark outline and the fading that color out with water. Then I would layer the first color with a second color doing the same process. This can be seen with the rocks and the water. The edges of the rocks and water both have darker colors and fades out. There also is a contrast of color with the yellow and orange leaves against the blue and purple shades of the water.

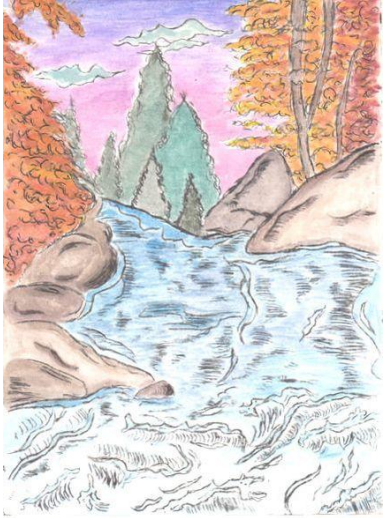


This was another poor print that occurred. Therefore I repeated a similar process as the one above but with different colors. Since only they top half of the print worked, I focused on the detail in the leaves and how the layering of different colors added more depth and detail to the piece.



# Critical Investigation: Artistic Investigation

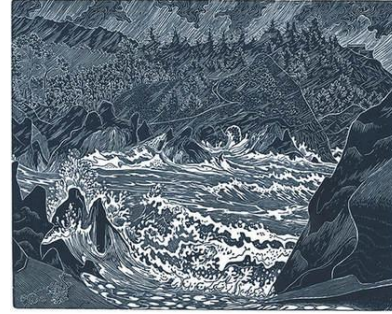
The piece *Tetons from Snake River* and *Yankee Point from Gibsons Beach, Pt. Lobos* by Tom Killion inspired me to create "Summertime Sadness" due to Killion's detailed work and style of landscape. In *Tetons from Snake River* include the overlook and layout of the Peshtigo River and how I was to present it. In *Yankee*



*Point from Gibsons Pt. Lobos* shows great detail in the waves in I incorporated into my piece. When creating my piece I used the same layout basing off of the Peshtigo River image and the piece *Tetons from Snake River*. From *Yankee Point from Gibsons Beach, Pt. Lobos* I included the same detail in the waves onto my piece.

"Summertime Sadness"  
17.5 cm x 12.5 cm  
Drypoint  
October 20, 2017

*Yankee Point from Gibsons Beach, Pt. Lobos.* (n.d.). Retrieved October 25, 2017



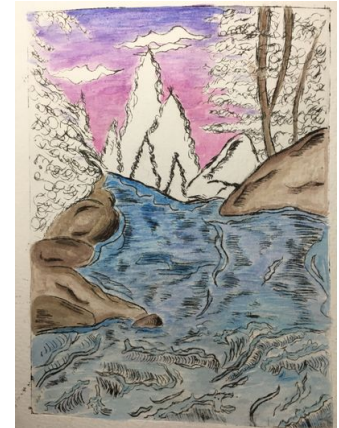
When creating my piece I was inspired by Tom Killion and his two pieces *Yankee Point from Gibsons Beach, Pt. Lobos* and *Tetons from Snake River*. From the piece *Yankee Point from Gibsons Beach, Pt. Lobos* I imitated the style of the waves and used the same technique, making the waves look as if they are crashing. I also tried incorporating a similar style when etching the trees creating a swirl effect. In *Tetons from Snake River* I used a similar layout by having the perspective point be slightly located off the middle of the piece and following through with trees on both sides. When creating my piece I based my layout on Killion's piece but also used a photograph of the Peshtigo River to include some of its qualities. By viewing Tom Killion's pieces and comparing it to my piece you can see how similar aspects are shared from the overall layout, to the details in the water.

*Tetons from Snake River.* (n.d.). Retrieved October 25, 2017

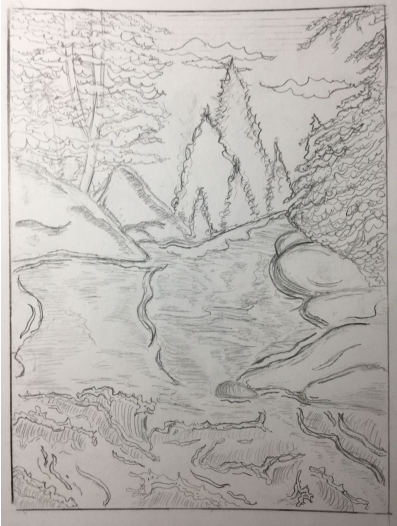


# Communication of Ideas: Meaning

The meaning of this piece is to connect to memory and focus on moments in one's life where they find happiness. I personally connect to my piece as its a representation of the Peshtigo River which is located up North in Crivitz, Wisconsin. This particular river means a lot to me because growing up my great grandparents lived up there ad this river was basically their backyard. From the back of the house you can view the sun reflecting off of the water and you were able to walk out into their backyard and go straight to the river bank. Whenever I do visit I always get flashbacks of when I was younger playing in the river and kayaking down it. This piece is title "Summertime Sadness" due to the fact that the leaves are changing and you are going to have to wait until next summer to be able to visit again. Overall this piece is suppose to allow viewers to connect to a memory of their past and focus on moments that made and continue to make them happy throughout their life.



# Reviewing, Refining, and Reflecting



When creating my piece I found that making detailed sketches of what I wanted my final piece would be like was helpful. This is because When I decided which sketch to use, I was able to place my template directly on top of my sketch book and start the etching process. What I thought turned out well was my finally dry point print because there was barely any smudges, it was centered onto the paper, it was a dark print with no

fading and a clean border. This print was one of the last prints I did, due to creating several of them to get the best print possible. What I also thought that that went well was experimenting with the multiple prints, using the watercolor paint.



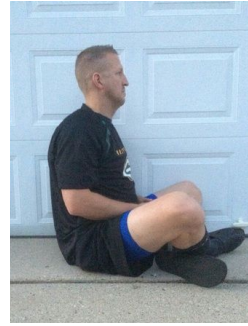
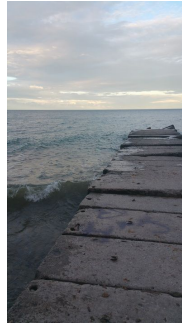
By using the watercolor paint, caused my piece to stand out more and allow the viewer to really envision the piece. One is able to image the scenery due to the watercolor rather than the viewing it without color. If I were t do this project again I would fix the detailing on the rocks because I tried adding a shading effect to show more detail but when I printed out the piece it was a dark spot, looking like the ink blended a bi together. I think this was due to having the lines too close and not being able to get the extra ink from in between each line.



# Skills, Techniques and Process: *Digital collage*

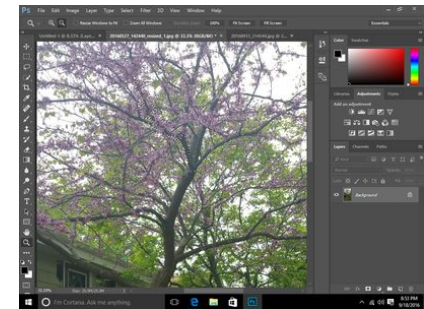
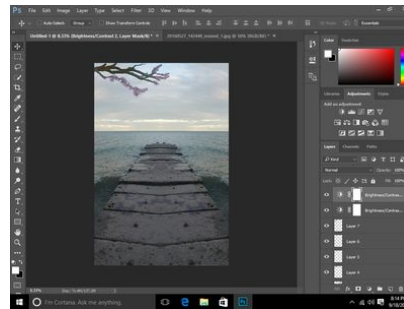
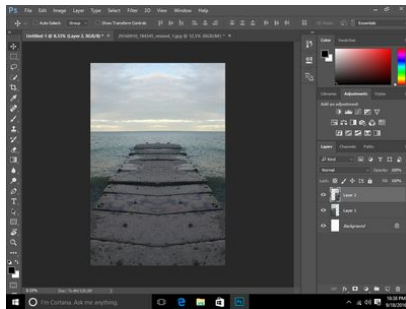
## Collecting Photos:

I took a series of photos that is going to be used for my digital collage. Each photo represents something different and will compliment each piece when put together as a whole.



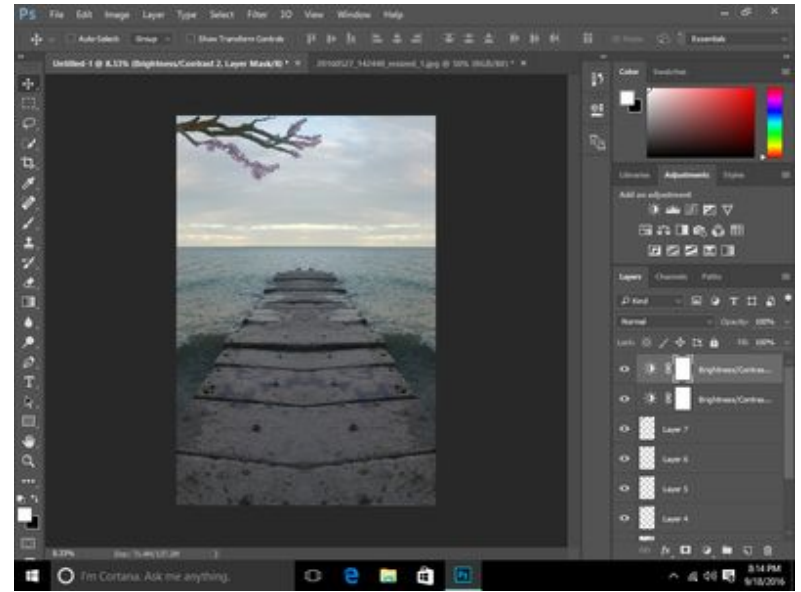
## Creating Process:

When first opening Photoshop the first task that I did was creating a background canvas that was 36inx24in, and setting the resolution to about 170. Then I started off with the background of a single photo being the view of the lake and sky, and duplicated and flipped it. This allowed myself to have a foundation to start my piece. Then from the photograph of the tree I took several cropped out branches, resized and rotated the picture to make them all look different. This added more detail to my piece, including the variety of branches. Then I cropped out my father and myself in the middle of the photograph back to back. Finally I then included the two cross necklaces by having them hang off of the branch on the side of myself.



# Experimentation

When doing my piece I experimented with the different sizes and branches that could be used for my final piece. The original photo that was taken contain a large variety of branches to choose from. Therefore I started to cut out in photoshop several different branches with some that contained flowers and others hat focused on the actually branch part of the tree.



Above you can see the layering of multiple branches in the left upper corner. There is also a variation of different transparencies of the branches to show depth and more detail. This is also repeated on the opposite side of the piece.

To the left you can see the main sections of the tree where I cropped the branches out of using photoshop and placed onto my piece as another layer. This is when the transparency of each branch was adjusted.

# Critical Investigation: Artistic Investigation



"The Son of Man by Magritte." *The Son of Man* by Magritte. N.p., n.d. Web. 15 Sept. 2016.

In *High Hopes* my artistic inspiration was *The Son of Man* by Rene Magritte. Magritte includes emphasis in his painting by covering the man's face with an apple, making it a bold, lime green hue, and having the man dress in dark suit. For my piece *My father and myself* wore black clothes to add more emphasis to the artwork, so that we would stand out even more with such a light background. I went for a water view look as my background like Magritte because it connects to how I am an outdoorsy person and can connect with myself the most when being outdoors.

When creating *High Hopes*, the piece *Decalcomania* by Rene Magritte connects to my piece because I used the idea of being a reflection of my father which correlates to Magritte's artwork the man standing next to the outline of himself. I used two of Magritte's pieces because they are both similar to each other but also expresses a different idea while still being relatively similar.

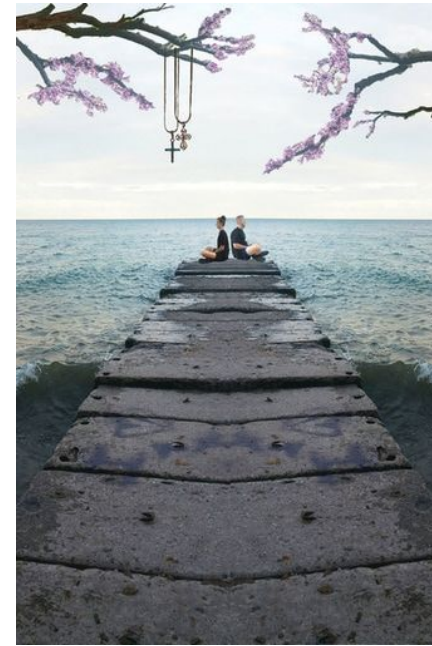
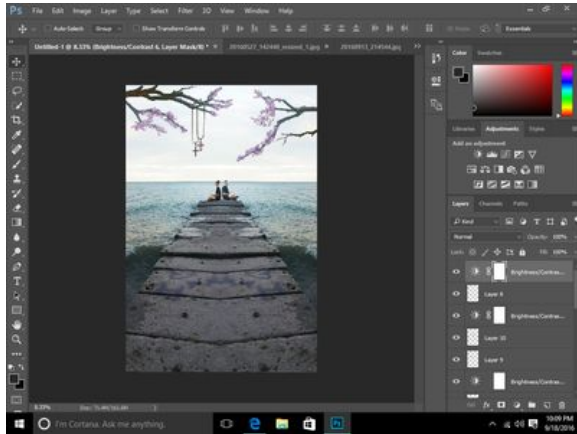
"Decalcomania by Rene Magritte."  
Magritte, R. (1966). *Decalcomania*[Photograph]. Collection of Dr. Noémi Perelman Mattis and Dr. Daniel C. Mattis.





# Communication of Ideas: Meaning

The digital collage *High Hopes* is about myself and how I like to be an independent person but also takes my father's advice seriously and how I look up to him. This piece represents the connections I have with nature and how I express myself. Also it shows my religious beliefs and how close I am with my father. My father has always been there to help me through every situation that I come across. He has always tried to do his best when my brother and I were younger, only growing up with our father. In my piece that's why I have him and myself sitting in the same position, back to back because even though we don't always agree, we are always there for each other.



"High Hopes"  
60.96x91.44 cm  
Digital Collage  
September 15th,  
2016

In my piece I used one photo as the background and just duplicated and rotated it to make it look as if it was the same piece because I can view it as if I am a reflection of my father and how we have similar mind-sets. Then I added my father and myself at the end of the stone slab making us look like the center of the piece, creating more emphasis on us. The two necklaces are something that I wear everyday and was given to me by my mother and father. The tree is another addition to how I express myself when I'm outside with nature.

# Reviewing, Refining, and Reflecting

From this project I learned faster ways on how to crop and edit photos and use refine edging tools. Next time I would like to work on adding more photos to the foreground and background, so it does look too simple. I was also struggling on having my photos in focus/clear because every time that I wanted to adjust the size, the photo would become somewhat blurry. I was also having difficulties with the layers of each photo and if you added a certain filter or saturation, it would affect all of the layers below the original layer that I added it to. What I liked about my piece was how I used one photo for my background and flipped and rotated the picture to make it look narrower the further the photos were cropped together. I also liked how I have my father and I placed to where we were back to back, in which I think it adds more meaning to the photo. Overall I think I did pretty well as the first actually time working with Photoshop in which I found as a quite interesting experience.

